






Tips in Creating Promethean ActivStudio Flipchart Objects

Create shapes, lines, arrows:

- Hold down the Option key and click on the Pencil tool. 
- A window of shapes, lines, and arrows will appear. 
- Click on the shape you wish to use. On the flipchart, drag the pencil to draw the shape.
- Select pen color and size before you draw the shape. It will determine the width of the line in the shape.



- Move the objects around with the Pointer 

Make a filled shape box:

Change the pen size to the largest size before creating the shape:

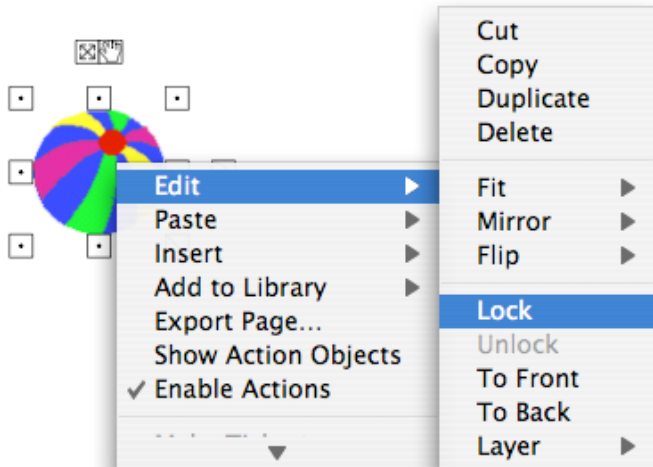


FYI: to Right Click

- Hold down the Control key and click on the Mac.
- Hold down the button on the Promethean pen when using the board.

Lock Objects/text box:

Right click once (hold down the Control key and click) on the object/text box you wish to lock. A menu will appear > select Edit > Lock



Make text/objects hide (under an object) until moved

(remember the herbivores in the food chain example? or pull a rabbit out of the hat!)

- Create the solid shape box with the largest pen - **lock it**
- Drag object(s) or text boxes under the locked box. Students can move them out later to sort/organize them.



- *You can put many objects or words under the locked shape.

Cloze Text:

- Create a text box and type the text, using an underline for the empty word space. **Lock** the text box.

This sentence is a cloze _____.

- Create a text box with the answer and place it in the correct position in the sentence. **Lock** the new text box.

This sentence is a cloze activity.

- Create a solid shape the same color as the background color and place it over the answer. (This example shows a different color so that you can see it.) **Lock** the shape box.

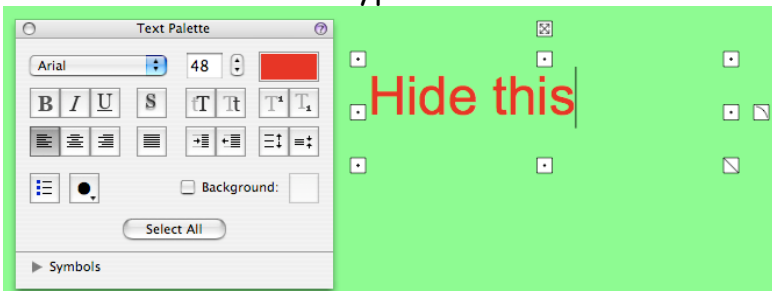
This sentence is a cloze .

- The student can then use the eraser tool to erase the shape box and see the answer:

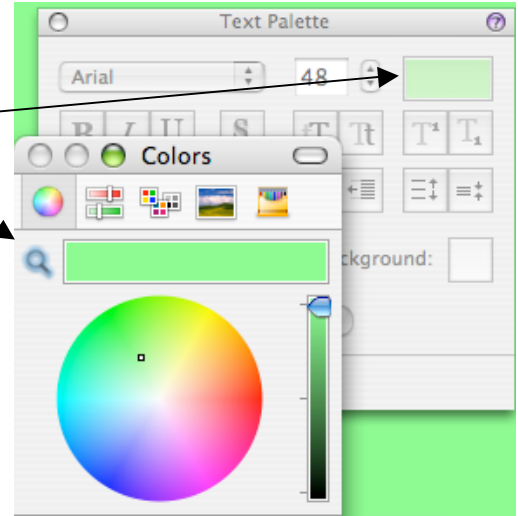
This sentence is a cloze activity.

Hide Text Objects

- Use the Fill Tool  to color the background.
- Create a text box and type the text.



- Color the text the same color as the background.
 - Click in the color box to see the Color Wheel.
 - Click on the Magnifying Glass tool, then click on the background. It will match the color for you.
- Students can later use the Fill Tool (with a different color) to make the word reappear.



Enable Actions

You can add buttons to the flipchart that automatically add actions, such as:



When a student clicks on these buttons, the appropriate tool in the toolbox is immediately selected. Find these actions and many more in the [Shared Collections > Lesson Building Tools > Action Objects](#).

- Note that the Action has to be enabled for them to work. If you move the mouse or pen over these buttons, you will see a blue circle arrow on buttons that are enabled.
- To move an Enabled Button on the flipchart, Control-Click once to select it and move it from the hand icon that appears at the top of the selected area:

