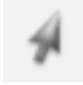


# Inserting Photos from iPhoto into AppleWorks 6

There are several options you may wish to use to insert photos from iPhoto into an Appleworks document.

## A. To insert one image from iPhoto without changing photo size:

1. Open the AppleWorks document you wish to use.

2. Make certain you have the pointer tool  selected.

3. Open iPhoto to the album with the pictures you want to copy.


4. Make both Appleworks and iPhoto windows small enough that you can see both open programs at the same time.

5. Drag the image from iPhoto directly onto the Appleworks page.



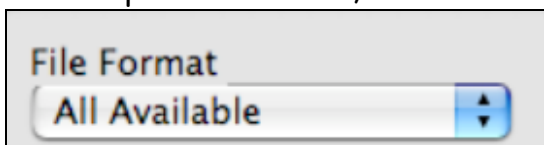
## OR Insert the photo from the File Menu:

1. Open the AppleWorks document you wish to use.

2. Make certain you have the pointer tool  selected.

3. From the File Menu, select Insert.

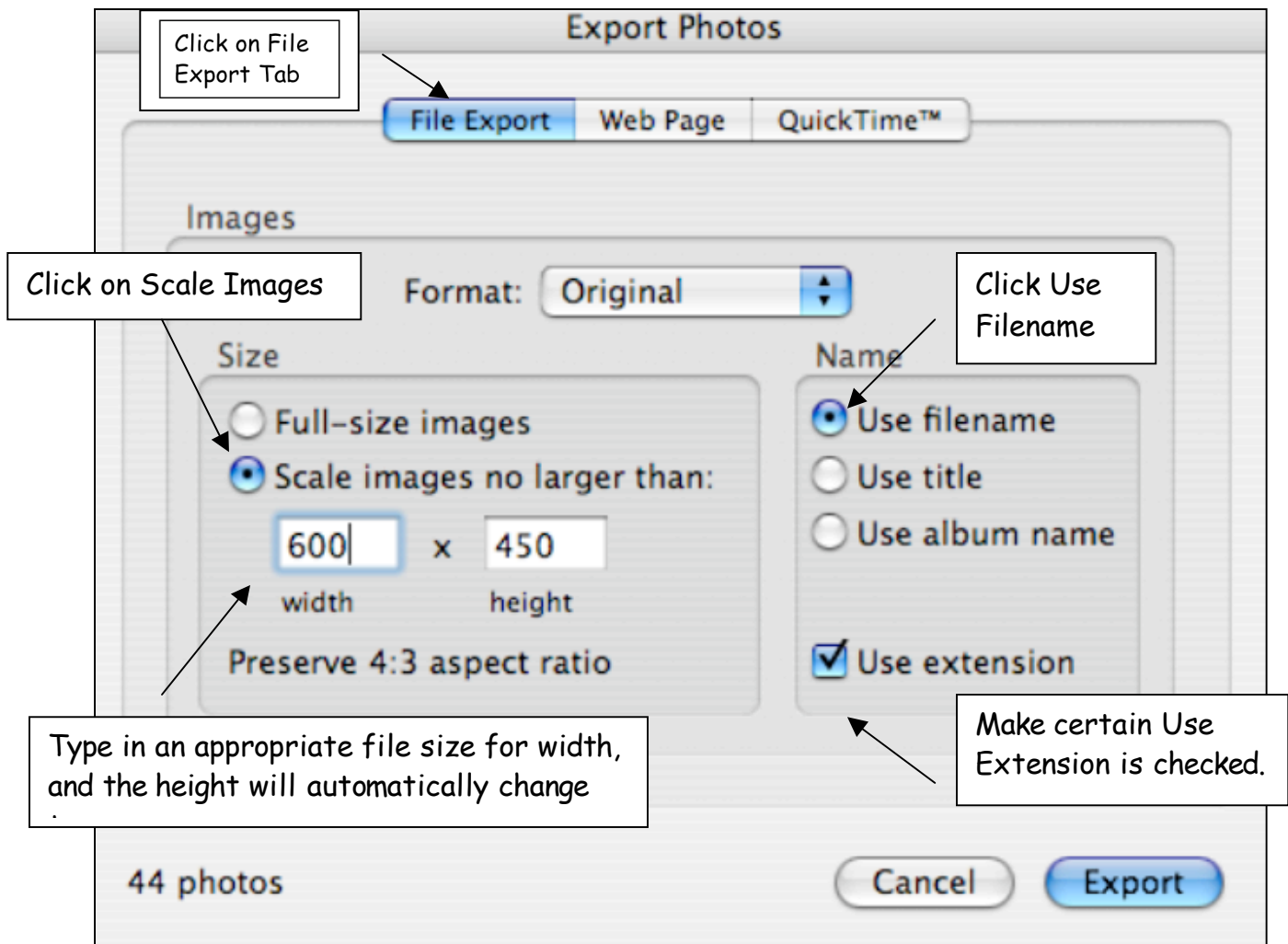
4. In the Open File window, make sure that the file Format is All Available.



5. Select the picture and click Insert.

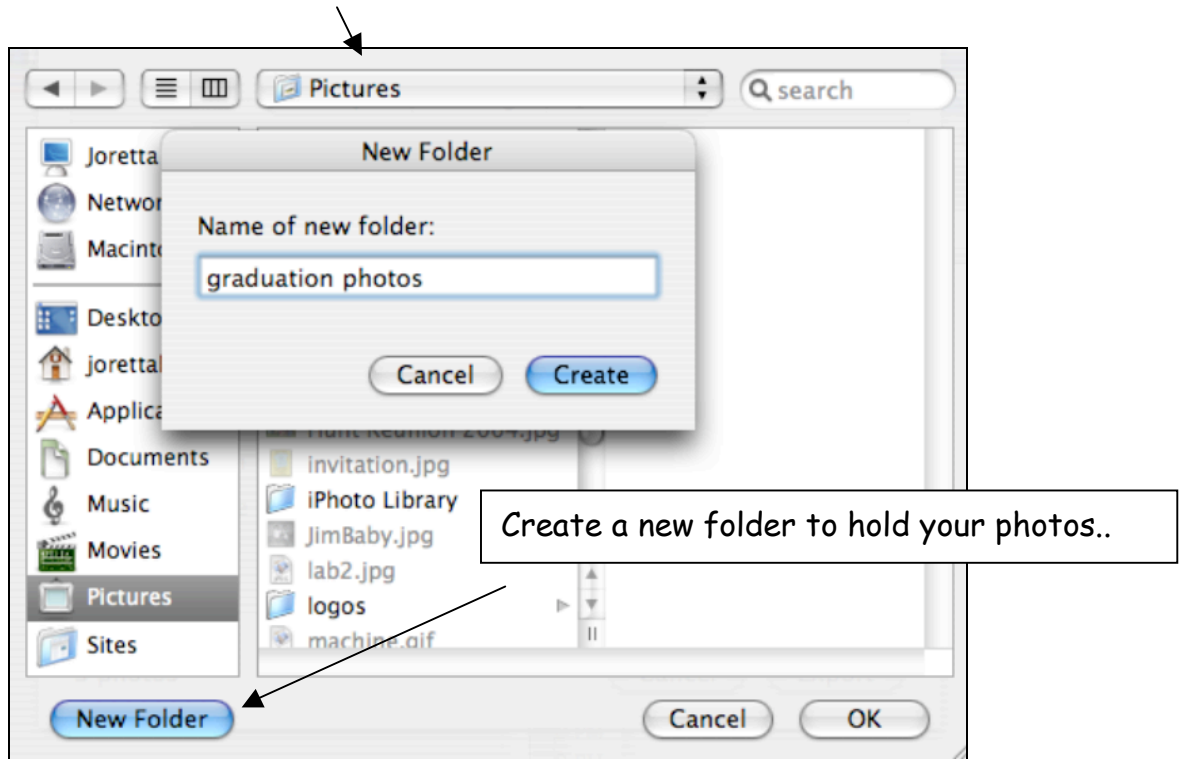
## B. Resizing photos in iPhoto before using in Appleworks:

1. Download your digital photos into iPhoto and place them in an album.
2. Select the photo or photos you want to copy.
3. From the Share Menu, select Export.
4. Click the File Export button at the top of the window.
5. In the file Export window, change the following options:

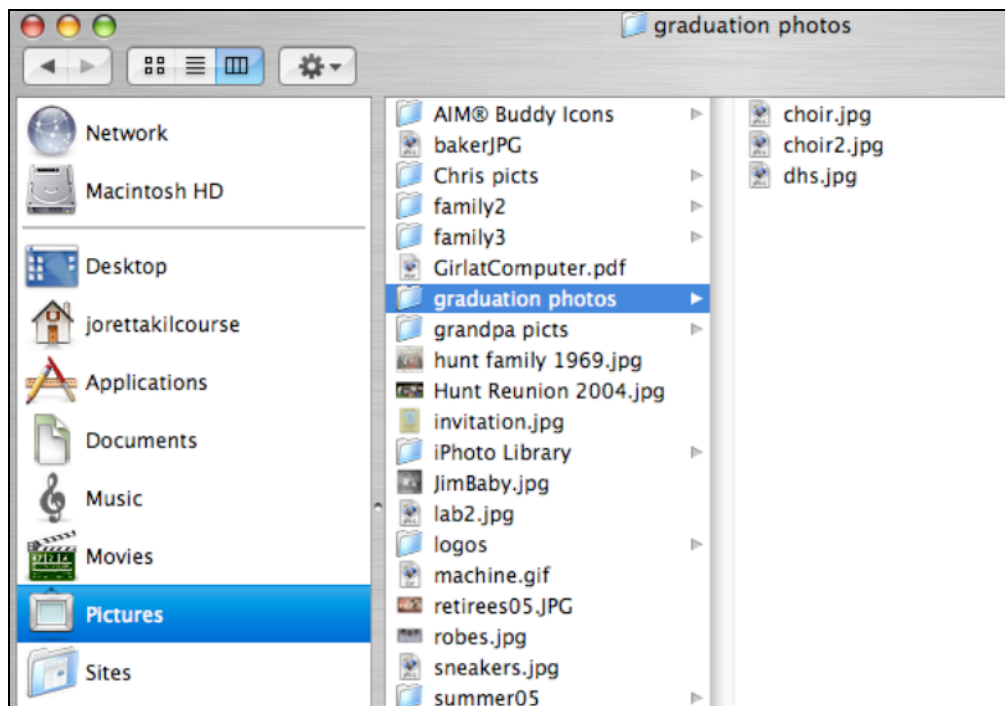


6. Click Export.

7. Navigate to Pictures folder:



8. To locate your photos, open the Finder window and click on the Pictures folder.



9. You can drag the photos from the Pictures folder directly onto the Appleworks document. OR use the Insert directions on page 1.